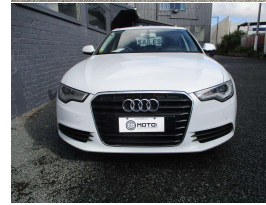
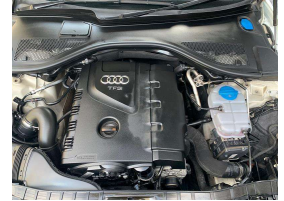


2012 Audi A6 2.0 T



VEHICLE INFORMATION

Cash Price

Includes GST

\$20,879

+ on-road-costs of \$695

Finance this vehicle from only

\$118.88

per week*

Total Amount Payable

\$26,884.23



Gain peace of mind with Mechanical Breakdown Insurance. Ask us how.

Body

4 door, Sedan

Odometer

75,888 km

Engine

2000 cc, Internal Combustion

Fuel Type

Petrol

Transmission

Automatic, Quattro

Wheels

-

VIN

WAUZZZ4G6DN030540

Reg No.

-

Ext Colour

White

History

Ex-Overseas

Seats

5 seats, Leather

Interior

Black, textured alloy

Audio

CD Player

Stock ID

44596

Exterior Features

Interior Features

- » All Electrics
- » Bluetooth Hands Free
- » Child seat anchor points
- » Climate Control
- » Remote Locking

Mechanical Features

- » ABS Braking w/ EBD
- » AWD
- » Cruise Control
- » Electric Mirrors
- » Twin Turbo



Moto, Phone 09 296 9871, Email info@motoltd.co.nz
16 Holloway Place, Penrose, Auckland 1061, New Zealand
www.motoltd.co.nz

* Finance calculation based on a 48 month term, 10% deposit and with an example annual fixed interest rate of 10.95%. Actual interest rate may be higher or lower. Includes an establishment fee of \$495.00 and a monthly maintenance fee of \$1.00. Full term total amount payable of \$26,884.23. Estimate only, not an offer of finance. Terms, conditions and lending criteria apply.